

WEARING THE VEIL

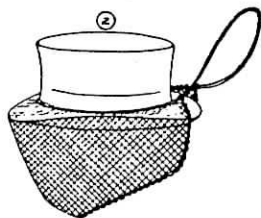
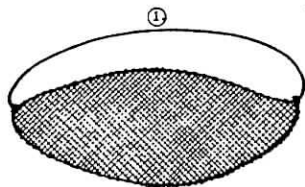


Figure 1: This is a veil worn by a lady riding side-saddle. There is no specific top or bottom.

Figure 2: Place around the brim of the hat and also under your chin. Pull the elastic back and cross it at the center of the back of your head. Raise the loop thus formed and slide it down over the crown of your top hat.

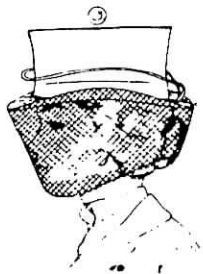


Figure 3: Place the elastic down close to the hat band.

Figure 4: Pin veil snugly at back, after pulling taut all around the face. No baggy veils, please! You need not cover the bun at the back of your head with the veil, unless it is large enough to do so conveniently.