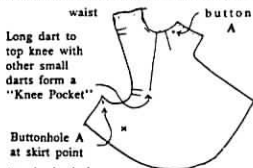


# THE SIDE-SADDLE APRON

By Jan Floyd

You will no doubt see variations of this or even different types of aprons or skirts. This is the most up-to-date style as it was when the era of side-saddle ended for most, and the type most commonly seen in use today. This same pattern can be used for English or Western riding. This sketch shows an apron which buttons down the left side. Skirts may be fully lined (best for a smooth, wrinkle-free effect) or only reinforced with a partial lining at top knee.



Long dart to top knee with other small darts form a "Knee Pocket"

Buttonhole A at skirt point

Attach elastic loop (24" strip of 1" elastic) at about "X" on inside of skirt. Sew strong enough to hold skirt in place but weak enough to tear loose if hung up in a fall.



Horizontally level hem 2" to 4" below right foot. Long enough so it does not work up over toes while riding.



Saddle side as when mounted. Point of skirt wrapped around top calf



The skirt is lifted to show elastic loop attached to inside of skirt going around in back of leg to the front of the foot and looping over the toe.

Many women twist this loop under the foot and then loop it over the toe again for a more secure hold



To wear when dismounted, pick up right side at buttonhole point. Pass around in back of you to left hand, wrapping skirt around you, smoothing folds. Button the buttonhole to the button attached at the left side near waist.



BACK



BACK



LEFT SIDE



FRONT